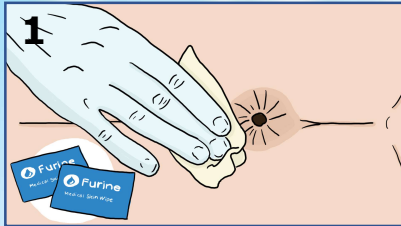


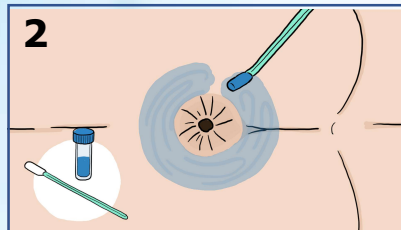
Application Guide



1 Clean and dry the perianal skin before applying the **External Faecal Catheter**.

- **Do not** use cleansing solvents that contain oil or creme
- **Do not** use Cavilon or any similar barrier film products
- Be sure that the skin is completely dry and intact

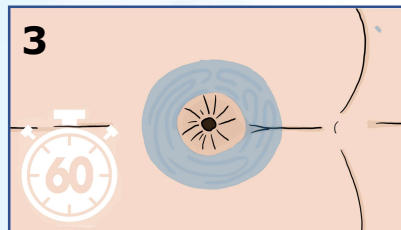
Finally use a **Medical Skin Wipe**, to remove any excess oil from the skin and to ensure a firm grip to the skin.



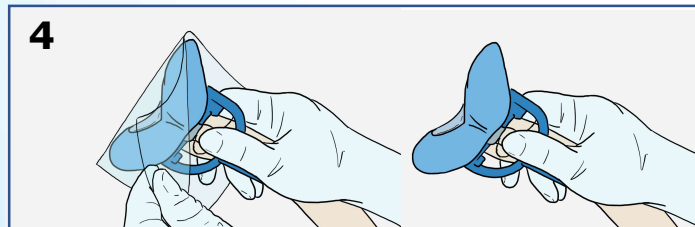
2 Apply Furine's **Adhesive Barrier Film** to the skin around anus using the swap.

It should be applied in a width of 2-3 cm.

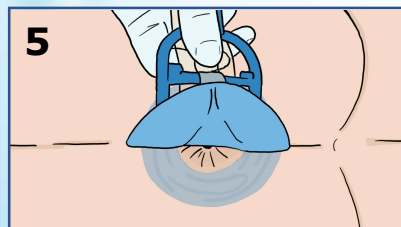
Apply a layer.



3 Allow the **Adhesive Barrier Film** to dry for 1-1½ minutes, while holding the buttocks apart.

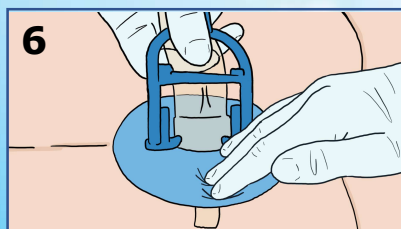


4 Remove the non-touch foil from the **External Faecal Catheter**, while at the same time keeping the catheter securely fixed on the applicator, by holding on to the strips.



5 Using the applicator, the **External Faecal Catheter** is now positioned on the skin, so that the flange is glued to the skin all the way round anus, on the previously applied **Adhesive Barrier Film**.

The catheter is positioned and firmly pressed on to the perianal skin, so that it first has contact with crena ani and perineum.



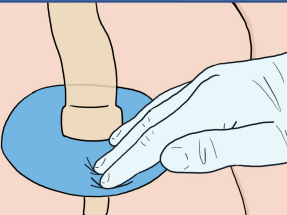
6 The flange is then pressed firmly to the perianal skin, using two fingers, in the whole circumference of the flange.

7




Carefully remove the applicator by pulling it away from the perianal skin, while at the same time, holding the catheter in place with the other hand.

8



The flange is again pressed firmly to the perianal skin using two fingers in the whole circumference of the flange.

9



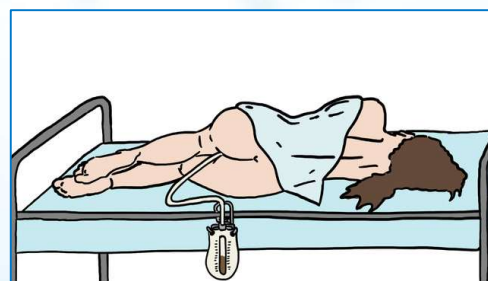
Connect the **External Faecal Catheter's** Connector (1) to Furine's **Faecal Collection Bag** (2), and position the bag on the side of the bed using the bed-hanger (3), that is attached to the connector. Place the bag on the safety hooks (4) on the bed-hanger to secure the bag.

The **External Faecal Catheter** can remain attached to the perianal skin for 7 days.

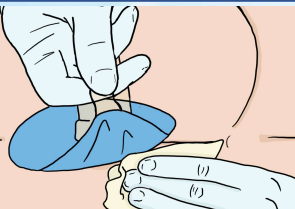
It is advised to check for leakages regularly.

The collection bag can be replaced when needed.

If the tube clots, the faeces can be gently pushed into the collection bag by squeezing the tube, while at the same time keeping the collar of the **External Faecal Catheter** securely in place with the other hand.



10



When removing the catheter use **Medical Skin Wipes** To dissolve and remove the adhesive.

Carefully pull on the strips of the Catheter while at the same time rubbing with 1-3 **Medical Skin Wipes**.